

High Pressure Flow Test Bench



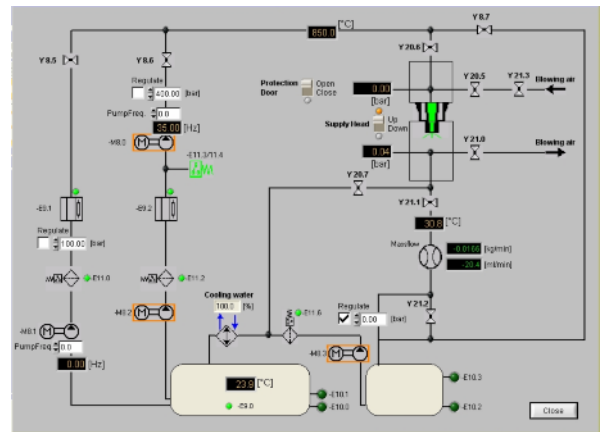
General view

Brief Description

The test bench has been designed for the determination of the static flow of diesel injector components. It is possible to select between different test plans for different test components.

Highlights

- Precise coriolis flow sensor technology (sensor accuracy $\pm 0,1\%$ of measured value)
- Flow test with regulated counter pressure
- High pressure flow measurement (max. 800 bar)
- Windows PC based control



Station overview

Technical Data

Upstream pressure range: 100 bar ... 160 bar
and 400 bar ... 800 bar

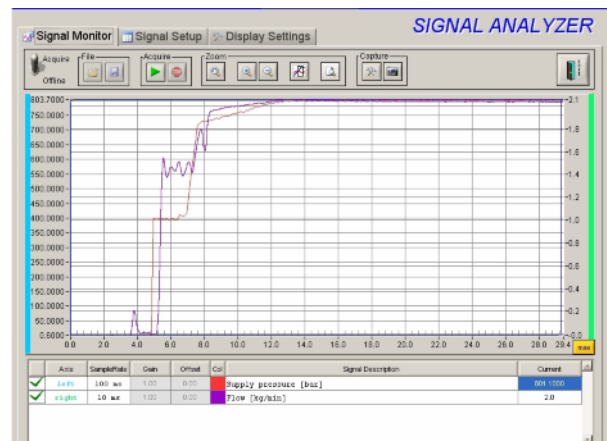
Counter pressure regulation range: 2 bar ... 4 bar

Upstream pressure regulation accuracy: $\pm 0,3$ bar (between 100 bar ... 160 bar)
 ± 1 bar (between 400 bar ... 800 bar)

Flow test range: max. 4 kg/min or max. 8 kg/min

Test fuel temperature regulation at: 40°C

Cycle time: < 40 seconds



Signal Analyzer

Sonplas