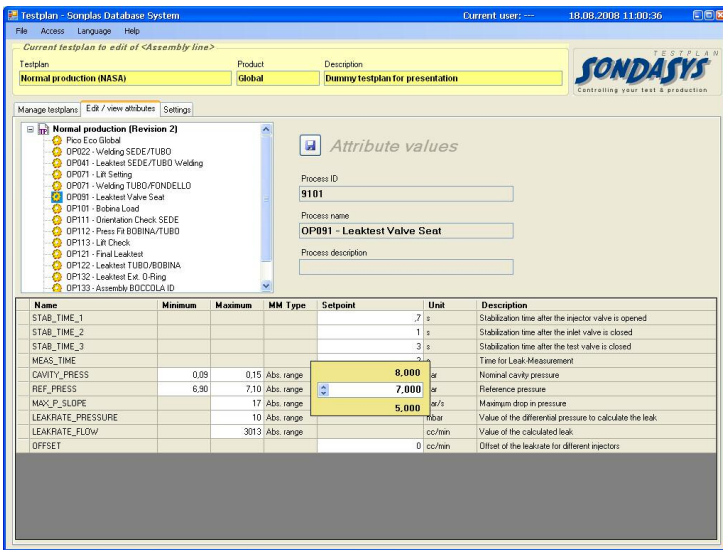


# SonDaSys Testplan

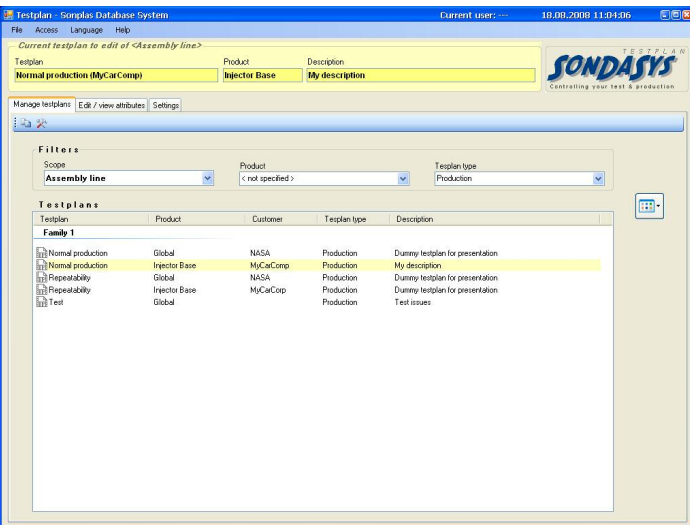


Edit Testplan Attributes



## Highlights

- Testplan Revision Handling: All testplan contain the property revision. This guarantees full traceability for the used production settings. It is possible to restore all the parameters of a part that were used during production.
- No limits on the amount of testplan. Testplans may be copied.
- Range check on user point. If a setpoint value may be a risk for the machine or the part, Limits may be passed to the attribute, so that the user must not dangerous values.
- Full localized language support. All windows, messages and used names can be translated in all languages with roman characters.
- Software is written in newest .NET technology using 100 % managed code.
- Data is stored in one of the world leading databases: ORACLE.



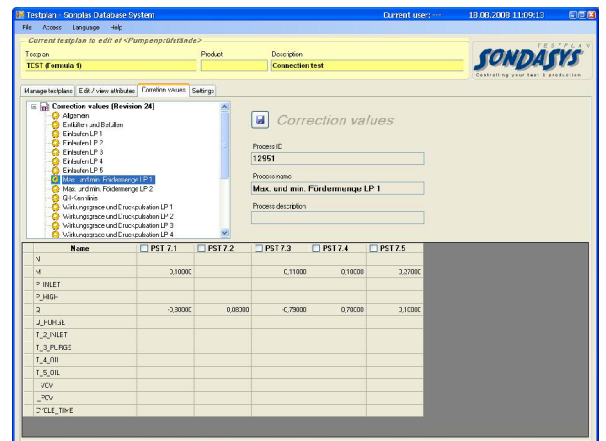
Choose Testplan

## Brief description

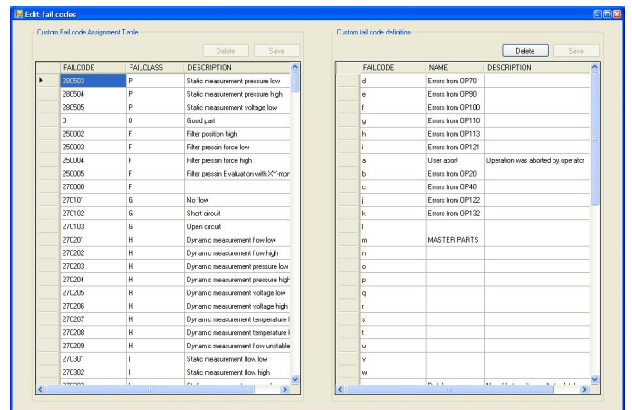
SonDaSys Testplan is a database tool to edit process control settings. Testplans contain all relevant set points and ranges, used in production and test conditions.

SonDaSys Testplan controls:

- Set points to be set to machines hard- or software
- Ranges necessary in the process control (e. g. range check of the pressure as start condition for flow measurement)
- Ranges for part's quality check (good / scrap ranges)
- Correction value database, correction values to be used to align different station's results, or to adjust the measurements to reference benches.



Edit Correction Values



Group Part Failure Codes to Custom Failure Classes

